

# DEFENDER RESTRICTED

Friction hinge for child safety

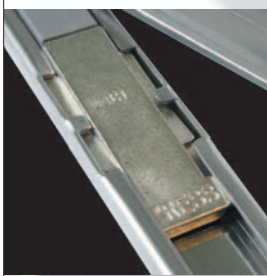


## DEFENDER RESTRICTED

FRICITION HINGE FOR CHILD SAFETY

- Built-in child resistant mechanism limits initial opening
- **NEW extended enclosed end cap** to enhance weather sealing
- Tested to BS6375 Part 2 to withstand a force of 600N when opened to the restricted position
- Built-in quick release lever allows the window to be fully opened for easy cleaning, total ventilation
- **NEW handed 'profiled' vent arm** further enhancing weather seal
- Restrictor automatically relocates and resets when the window is closed
- Available in ferritic 430\* and austenitic 304\* stainless steel for enhanced corrosion resistance
- 10 year guarantee (details available upon request)

▼ **QUICK RELEASE**  
Fully opening release lever relocates and resets automatically



▼ **SMOOTH OPERATION**  
Thermoplastic components for long life



\* Standard Ferritic (was 430) steel to BS EN ISO 10088/2 Grade 1.4016 or Austenitic (was 304) stainless steel to BS EN ISO 10088/2 Grade 1.4301 for enhanced corrosion resistance.



Manufactured in UK



# DEFENDER RESTRICTED

## Product Specification

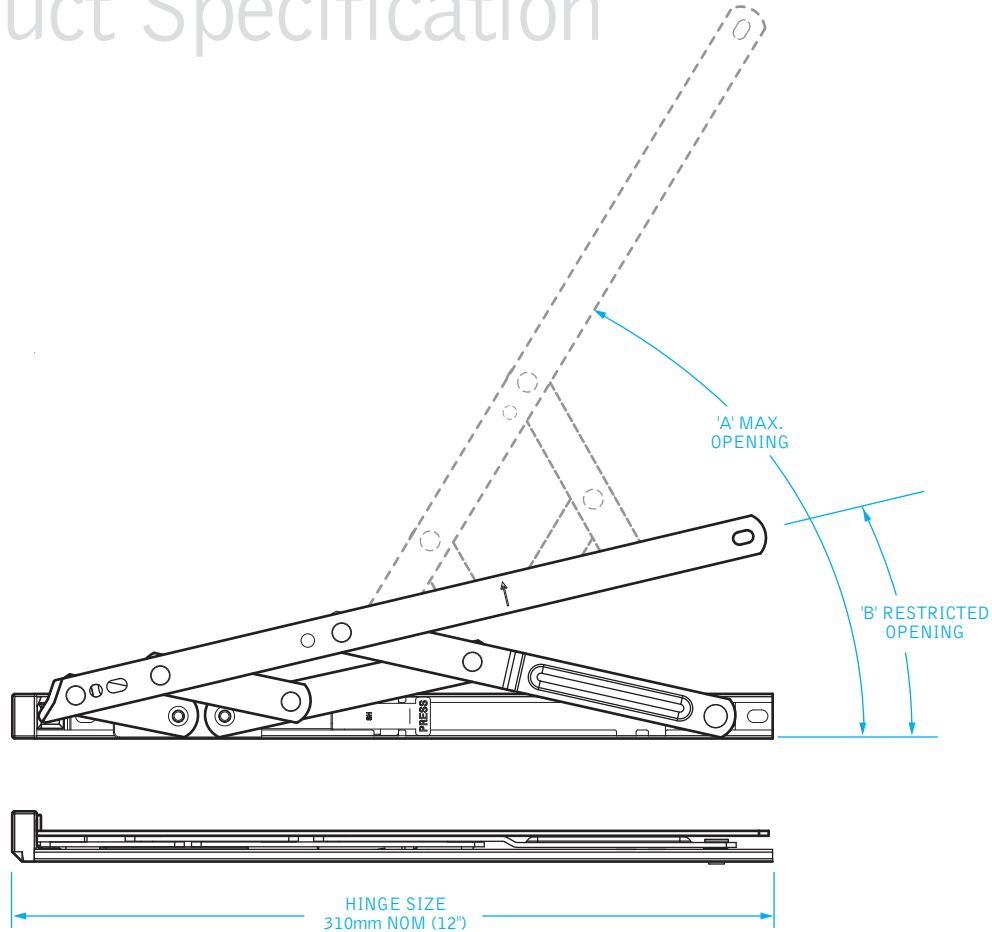
### PRODUCT SPECIFICATION

- **NEW slot hole slot** format will provide the ability to adjust the vent more easily.
- **NEW increased carrying capacity** on 20" and 24" top hung hinges
- Side hung restricted hinges are sold singularly as only one side hung restricted hinge is required and is fitted as the bottom hinge. Top hung restricted hinges are sold in pairs
- Drilling jigs for all sizes are available to order

Note: as with all types of friction hinges, friction cannot be provided until the slider moves, therefore when limiting the opening of vents to angles of 10° or less, a separate device will be required to prevent the window from closing.

The restricted opening gap is controlled by;

- The restricted opening angle shown (angle 'B')
- Profile thickness
- Vent size



#### DEFENDER RESTRICTED

| Hinge Size (Top Hung)  | Max Vent Weight (lb/Kg) | Max Vent Height (in/mm) | Min Vent Height (in/mm) | Max Opening Angle 'A' | Max Opening Angle 'B' |
|------------------------|-------------------------|-------------------------|-------------------------|-----------------------|-----------------------|
| 12/310                 | 44/20                   | 21.7/550                | 13.8/350                | 65°                   | 14°                   |
| 16/413                 | 46/21                   | 29.5/780                | 19.7/500                | 59°                   | 10°                   |
| <b>20/513</b>          | <b>57/26</b>            | <b>43/1100</b>          | <b>27.6/700</b>         | <b>50°</b>            | <b>7°</b>             |
| <b>24/615</b>          | <b>88/40</b>            | <b>51/1300</b>          | <b>33.5/850</b>         | <b>37.5°</b>          | <b>6°</b>             |
| Hinge Size (Side Hung) | Max Vent Width          | Min Vent Width          |                         |                       |                       |
| 12/310                 | 48/22                   | 23.6/600                | 11.8/300                | 58°                   | 13°                   |
| 16/413                 | 53/24                   | 27.6/700                | 15.7/400                | 58°                   | 11°                   |



Due to our policy of continual improvement we reserve the right to alter specifications without notice. It is the responsibility of the window manufacturer to ensure that the finished window meets the required performance and safety specification.

All transactions are subject to our standard conditions of supply, which are available on request.